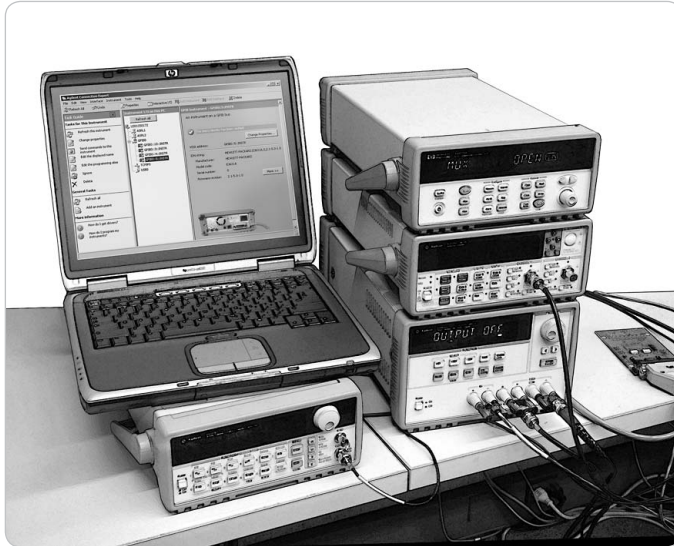


Agilent E2094S IO Libraries Suite 15.5

Data Sheet

*“Connecting to
instruments just works”*

- Automatically detects instruments connected to your PC and configures the interfaces
- Compatible with GPIB, USB, Ethernet/LAN, RS-232, and VXI test instruments from a variety of vendors
- I/O software that enables instrument communication for a variety of development environments (Agilent VEE Pro, MATLAB®, NI LabVIEW, Microsoft Visual Studio® and more)



Establish an error-free connection between your test instruments and your PC in less than 15 minutes

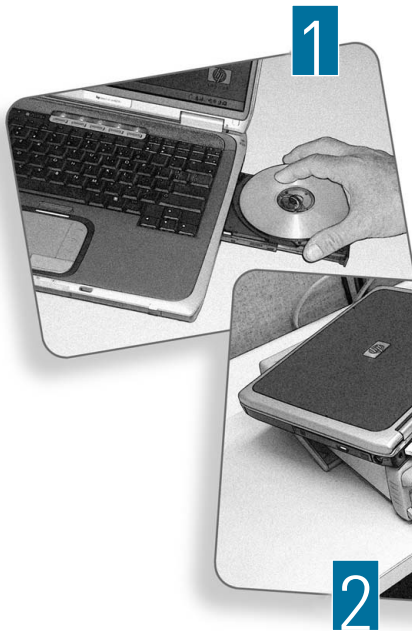
Agilent E2094S IO Libraries Suite eliminates hours of effort and endless details that come with installing, connecting and configuring PC-controlled test systems. Using this connectivity software, you can connect your instruments to your PC as easily as you connect a printer — even if your system combines instruments from multiple vendors.

Simply install Agilent's IO Libraries Suite on your PC. Then hook up the USB, Ethernet/LAN, RS-232 or GPIB cables between your instruments and your PC. In less than 15 minutes you have an error-free connection that simply works.

When you install IO Libraries Suite on your PC, it dynamically identifies smart defaults for installation based on your hardware configuration and previously installed software. Of course, you can always customize the defaults if you wish. When installation is complete, the software automatically discovers instruments connected to your PC and automatically configures and verifies the interfaces, no matter what vendor or what software application you use.



Agilent Technologies



1

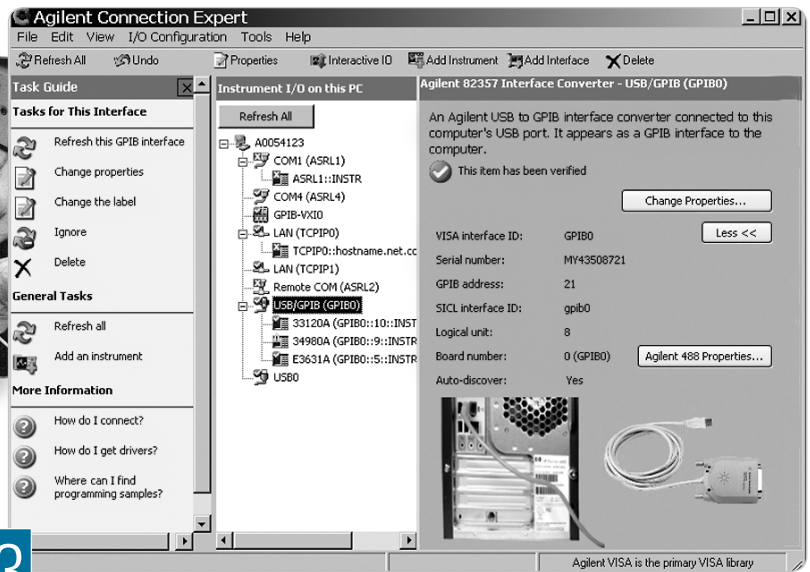
"It simply works"



2

Connecting is as easy as 1-2-3

1. **Install** Agilent IO Libraries Suite software on your PC
2. **Hook up** the USB, LAN, RS-232 or GPIB cables between your instruments and your PC
3. **Detect instruments** and devices, then configure interfaces using Connection Expert



3

- *Intelligent task guide designed for both experts and occasional users*
- *Easy-to-follow "Tree View" outline of all I/O interfaces helps you see connected devices immediately*

Easily mix instruments from different vendors

Agilent IO Libraries Suite eliminates the headaches associated with trying to combine hardware and software from different vendors. The software is compatible with GPIB, USB, LAN and RS-232 test instruments, no matter who makes them.

When you install the IO Libraries Suite, the software checks for the presence of other I/O software on your computer. If it finds another vendor's VISA libraries (such as National Instruments), it automatically installs in a side by side mode that allows you to use your existing I/O software and the Agilent software together in multi-vendor systems without you being concerned with the behind-the-scenes details.

Write programs the way you want

In addition the IO Libraries are compatible with a variety of application development environments and programming APIs including Agilent or NI VISA, VISA COM, SICL, and Agilent 488 (compatible with NI-488.2), giving you even more flexibility to choose the software and the hardware from any vendor to get your job done.

Works with millions of existing instruments from hundreds of vendors

Use the most trusted and reliable technology for your connections. The IO Libraries Suite ships with more than 350 instruments from Agilent Technologies. It works with literally millions of existing instruments — helping you to minimize the number of software packages you need. You won't have to switch between packages as you use a mix of existing and new instruments in the future.

Specifications

Supported interfaces*

GPIO: standard IEEE 488.1

USB: USB 2.0 or lower (with the USBTMC or USBTMC-USB488 protocol)

LAN/Ethernet: standard LAN (with VXI-11, SCL-LAN and sockets)

RS-232/Serial

VXI

Supported development environments and supported I/O software

VB6: VISA COM, VISA, SCL, Agilent 488

C/C++, Managed C++: VISA COM, VISA

.NET languages (VB.NET, C#): VISA COM, VISA, Agilent 488

LabVIEW: VISA, Agilent 488, VISA COM

MATLAB: VISA, Agilent 488, VISA COM

Note: Agilent IO Libraries Suite supports VEE Pro program development with drivers and/or Direct IO.

I/O utilities

Connection Expert	Automatically scans and configures your instrument IO, helps you get connected quickly and easily and displays the status of your interfaces and instruments.
Interactive IO	Lets you quickly send commands to instruments and read responses.
Interactive LXI	Allows you to send and receive LXI events, monitor, and manage LXI instrument precision clocks.
IO Monitor	Lets you monitor and debug I/O calls made on any of Agilent's supported buses using Agilent SCL, VISA, or VISA COM.
VISA Assistant	Uses VISA I/O Library to communicate with and control VXI, GPIB and serial instruments. Main functionality is replaced by the Interactive IO utility but in addition allows you to change VISA attributes, configure drivers and provides memory I/O.
IO control	Provides easy access to the IO Libraries Suite from the PC screen system tray.
VXI resource manager	Provides configuration of the IEEE 1394 connection from PC to VXI.
viFind32	Debug utility uses VISA functions to find resources and lists them in a console window.

* See the latest information on supported interfaces and operating systems for IO Libraries Suite 15.5 at www.agilent.com/find/iolib_revmatrix. To identify which versions of IO Libraries support particular operating system and interface combinations, go to www.agilent.com/find/iolib_omatrix.

System Requirements: Agilent IO Libraries version 15.5

PC software: Operating system

- Windows 7 32-bit and 64-bit (Starter, Home Basic, Home Premium, Professional, Ultimate, Enterprise)
- Windows Vista 32-bit and 64-bit (Home, Home Premium, Business, Ultimate, Enterprise Editions)
- Windows XP Pro or Home edition service pack 2 or later, 32-bit only

PC hardware

- Processor: 600 MHz Intel Pentium® class (800 MHz or greater recommended)
- RAM: 256 megabytes (MB) (1 GB or greater recommended)
- Hard disk space required: 1.5 GB
- Display: 800 x 600, 256 colors
- Input device: Microsoft mouse or compatible pointing device
- Device for installation: CD-ROM
- Web connection for upgrades and drivers

I/O software compatibility—get the best of both worlds

Even if you have multiple vendor I/O software installed, you get the best of all worlds with Agilent's open IO Libraries Suite. For instance, the IO Libraries Suite automatically detects NI's software and safely installs Agilent's I/O software to make them compatible with each other, so you have maximum flexibility for instrument control with the mixed vendor system you use.

Ordering information

The Agilent IO Libraries Suite is delivered to you on the "Automation-Ready CD." The CD is included with Agilent Instruments and I/O hardware (such as USB/GPIB converters, GPIB cards, LAN/GPIB converters).

If you already own any of the above Agilent products, and would like to upgrade to the latest version of IO Libraries Suite, download the free upgrade software at www.agilent.com/find/iosuite.

Automation-Ready CD contents

- IO Libraries Suite
 - I/O libraries: VISA, VISA COM, SCL, Agilent 488
 - Connection Expert
 - I/O utilities
 - Getting Started Guide, Connectivity Guide and full reference information for all I/O Libraries
 - Sample programs
- Microsoft .NET Framework Version 2.0 SP2

Related Agilent literature

Publication title	Publication type	Publication number
Agilent VEE Pro	Data sheet	5988-6302EN
Hardware IO family (82357A USB/GPIB interface, E5810A LAN/GPIB gateway, 82350B PCI GPIB interface, E5805A USB 4-port RS232 interface, E5813A Networked 5-port USB Hub)	Data sheet	5989-1889EN
Computer I/O Considerations	Application note	5988-9818EN
Understanding Drivers and Direct I/O	Application note	5989-0110EN
Using SCPI and Direct I/O vs. Drivers	Application note	5989-1414EN

For additional information on these and other products, please visit www.agilent.com/find/connectivity.



Agilent Email Updates

www.agilent.com/find/emailupdates

Get the latest information on the products and applications you select.



Agilent Direct

www.agilent.com/find/agilentdirect

Quickly choose and use your test equipment solutions with confidence.



www.lxistandard.org

LXI is the LAN-based successor to GPIB, providing faster, more efficient connectivity. Agilent is a founding member of the LXI consortium.

Remove all doubt

Our repair and calibration services will get your equipment back to you, performing like new, when promised. You will get full value out of your Agilent equipment throughout its lifetime. Your equipment will be serviced by Agilent-trained technicians using the latest factory calibration procedures, automated repair diagnostics and genuine parts. You will always have the utmost confidence in your measurements. For information regarding self maintenance of this product, please contact your Agilent office.

Agilent offers a wide range of additional expert test and measurement services for your equipment, including initial start-up assistance, onsite education and training, as well as design, system integration, and project management.

For more information on repair and calibration services, go to:

www.agilent.com/find/removealldoubt

For more information on Agilent Technologies' products, applications or services, please contact your local Agilent office. The complete list is available at:

www.agilent.com/find/contactus

Americas

Canada	(877) 894-4414
Latin America	305 269 7500
United States	(800) 829-4444

Asia Pacific

Australia	1 800 629 485
China	800 810 0189
Hong Kong	800 938 693
India	1 800 112 929
Japan	0120 (421) 345
Korea	080 769 0800
Malaysia	1 800 888 848
Singapore	1 800 375 8100
Taiwan	0800 047 866
Thailand	1 800 226 008

Europe & Middle East

Austria	01 36027 71571
Belgium	32 (0) 2 404 93 40
Denmark	45 70 13 15 15
Finland	358 (0) 10 855 2100
France	0825 010 700*
	*0.125 €/minute
Germany	07031 464 6333
Ireland	1890 924 204
Israel	972-3-9288-504/544
Italy	39 02 92 60 8484
Netherlands	31 (0) 20 547 2111
Spain	34 (91) 631 3300
Sweden	0200-88 22 55
Switzerland	0800 80 53 53
United Kingdom	44 (0) 118 9276201
Other European Countries:	
www.agilent.com/find/contactus	

Revised: October 1, 2008

Product specifications and descriptions in this document subject to change without notice.

© Agilent Technologies, Inc. 2009
Printed in USA, September 1, 2009
5989-1439EN

MATLAB is a registered trademark of The MathWorks Inc.

Microsoft and Windows are US registered trademarks of Microsoft Corporation.

Pentium is a U.S. registered trademark of Intel Corporation.



Agilent Technologies