

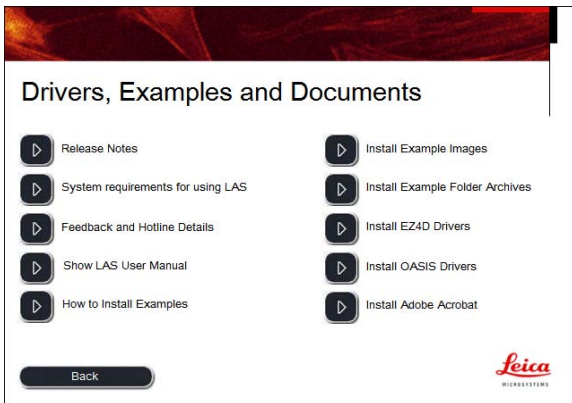
# Installing Examples

Example images and sequences are installed from the LAS DVD to the location that you choose. Additionally example Folder Archives may also be installed. The installation steps are as follows.

1. Insert the LAS DVD in a DVD drive and it will run and display the LAS Install dialog as shown.



2. Click on the button 'Drivers, Examples and Documents' and the LAS install dialog for these items will appear as shown.

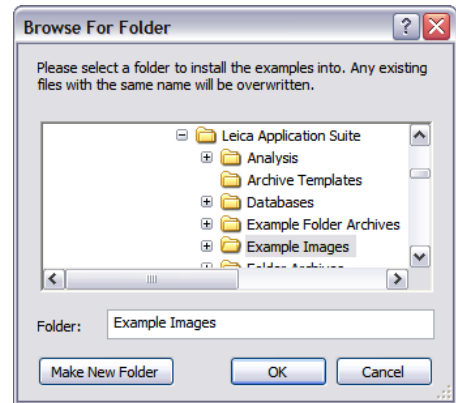


From this dialog you can install example images that are stored in Windows Folders and are used with LAS in core mode using LAS Image Explorer.

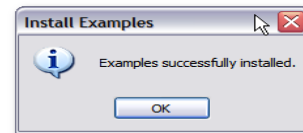
Additionally you can install Example Folder Archives for use with the LAS Archive Basic and Archive Standard modules if you have these licensed.

## Example Images

1. Click on the button next to 'Install Example Images' and the following 'Browse for Folder' dialog will appear.

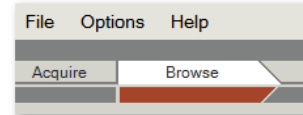


2. The next step is to select a folder into which the Examples are copied. This can be any folder but typically we will select the default Shared Documents (Public on Vista) -> Leica Application Suite/Example Images. Click OK and the Example Images will be copied to the folder specified and the following message will appear:

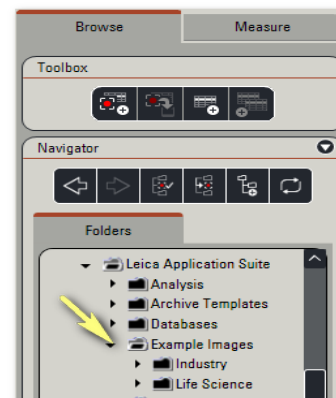


This document will appear to help you find the images.

3. Now start LAS and click on the Browse workflow.



4. The Browse Navigator will appear, expand the Navigator panel if it is collapsed.

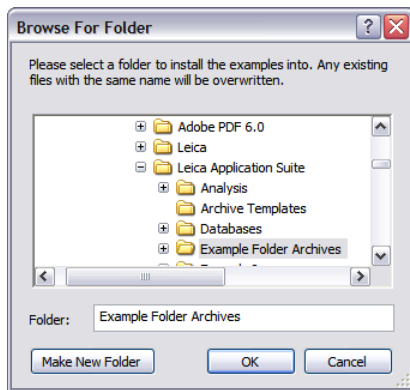


5. Scroll through the folders to find the one you specified for the Example Images and you can now load them into LAS.

Example Folder Archives on next page

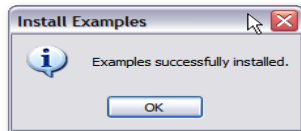
## Example Folder Archives

1. Click on the button next to 'Install Example Folder Archives' and the following 'Browse for Folder' dialog will appear.



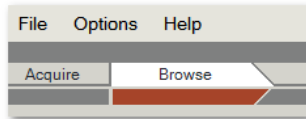
2. The next step is to select a folder into which the Example Folder Archives are copied. This can be any folder but we will typically select the default Shared Documents (Public on Vista) -> Leica Application Suite/Example Folder Archives.

Click OK and the Example Folder Archives will be copied to the folder specified and the following message will appear

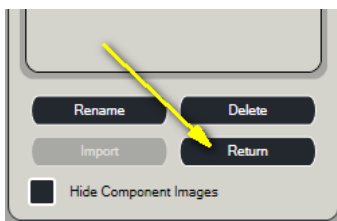


This document (the one you are reading) will appear to help you find the Folder Archives.

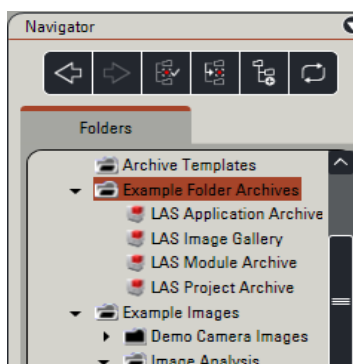
3. Now start LAS and click on the Browse workflow.



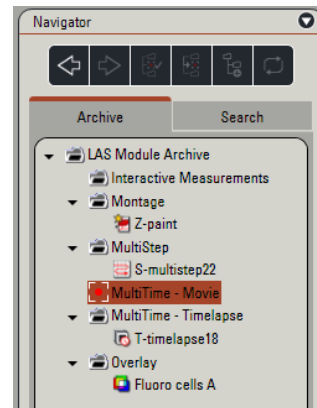
4. We now have to activate the Example Archives. The Browse Navigator will appear unless you previously used LAS with a Folder Archive. If this was the case, please exit the Archive by clicking Return at the bottom of the Navigator panel.



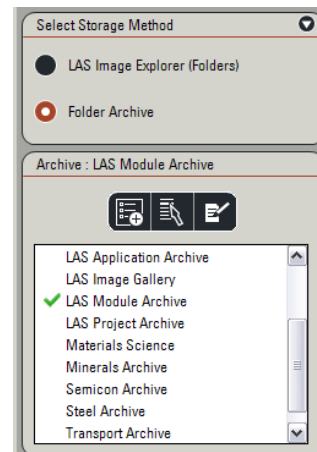
5. Scroll through the folders to find the one you specified for the Example Folder Archives and click on the arrow next to this folder. The Folder Archives will be shown with a small LAS icon next to them.



6. The final step is to select the archive that you wish to use. Simply double-click on the one required and it will be loaded ready for use. If you do not have a license to use the LAS Archive options, the archive will not be loaded.



7. The archive contents will be loaded into the gallery. Click on the folders in the archive to find images and sequences.
8. Once an archive is activated, it is added to the Selected Archive list that can be found in Setup-> Archive.



You can only select the archives from this panel after they have been activated.