

Agilent CSV Export Utility

User Guide

Notices

© Agilent Technologies, Inc. 2011

No part of this manual may be reproduced in any form or by any means (including electronic storage and retrieval or translation into a foreign language) without prior agreement and written consent from Agilent Technologies, Inc. as governed by United States and international copyright laws.

Manual Part Number

Available in electronic format only

Edition

First Edition, June 2011

Sales and Technical Support

To contact Agilent for sales and technical support, refer to the "support" links on the following Agilent web resources:

www.agilent.com/find/ (product-specific information and support, software and documentation updates)

www.agilent.com/find/assist (worldwide contact information for repair and service)

Information on preventing damage to your Agilent equipment can be found at www.agilent.com/find/tips.

Declaration of Conformity

Declarations of Conformity for this product and for other Agilent products may be downloaded from the Web. Go to <http://regulations.corporate.agilent.com/DoC/search.htm> and click on "Declarations of Conformity" You can then search by product number to find the latest Declaration of Conformity.

Warranty

The material contained in this document is provided "as is," and is subject to being changed, without notice, in future editions. Further, to the maximum extent permitted by applicable law, Agilent disclaims all warranties, either express or implied, with regard to this manual and any information contained herein, including but not limited to the implied warranties of merchantability and fitness for a particular purpose. Agilent shall not be liable for errors or for incidental or consequential damages in connection with the furnishing, use, or performance of this document or of any information contained herein. Should Agilent and the user have a separate written agreement with warranty terms covering the material in this document that conflict with these terms, the warranty terms in the separate agreement shall control.

Technology Licenses

The hardware and/or software described in this document are furnished under a license and may be used or copied only in accordance with the terms of such license.

Restricted Rights Legend

If software is for use in the performance of a U.S. Government prime contract or subcontract, Software is delivered and licensed as "Commercial computer software" as defined in DFAR 252.227-7014 (June 1995), or as a "commercial item" as defined in FAR 2.101(a) or as "Restricted computer software" as defined in FAR 52.227-19 (June 1987) or any equivalent agency regulation or contract clause. Use, duplication or disclosure of Software is subject to Agilent Technologies' standard commercial license terms, and non-DOD Departments and Agencies of the U.S. Government will receive no greater than Restricted Rights as defined in FAR 52.227-19(c)(1-2) (June 1987). U.S. Government users will receive no greater than Limited Rights as defined in FAR 52.227-14 (June 1987) or DFAR 252.227-7015 (b)(2) (November 1995), as applicable in any technical data.

Manual Notices

This manual provides these notices:

CAUTION

A **CAUTION** notice denotes a hazard. It calls attention to an operating procedure, practice, or the like that, if not correctly performed or adhered to, could result in damage to the product or loss of important data. Do not proceed beyond a **CAUTION** notice until the indicated conditions are fully understood and met.

WARNING

A **WARNING** notice denotes a hazard. It calls attention to an operating procedure, practice, or the like that, if not correctly performed or adhered to, could result in personal injury or death. Do not proceed beyond a **WARNING** notice until the indicated conditions are fully understood and met.



1 Using the CSV Export Utility

CSV Export Utility - Introduction 2
Accessing the CSV Export Utility 3
Exporting Packet Data to a .csv File 4

This chapter introduces you to the CSV Export utility and describes how you can use this utility.

CSV Export Utility - Introduction


The CSV Export utility is a utility available in the Protocol Viewer window of the Agilent Logic Analyzer GUI. It allows you to export the captured packet information from the Protocol Viewer window to a specified .csv file. This can help you save the captured packet data and use it later in other analysis tools.

The CSV Export utility can export all the data captured and displayed in the Protocol Viewer window or a specified time/marker based range of data.

You can delimit the data exported to a .csv file by comma, semicolon, or any other delimiter of your choice.

Accessing the CSV Export Utility

To access this utility:

- 1 Access the **Protocol Viewer** window in the Logic Analyzer GUI.
- 2 Click the  **Export Protocol Data in CSV Format** icon displayed in the Protocol Viewer toolbar.

The **Protocol Export** GUI is displayed. Using this GUI, you can export the captured packet data from Logic Analyzer GUI to the .csv file that you specify in this GUI.

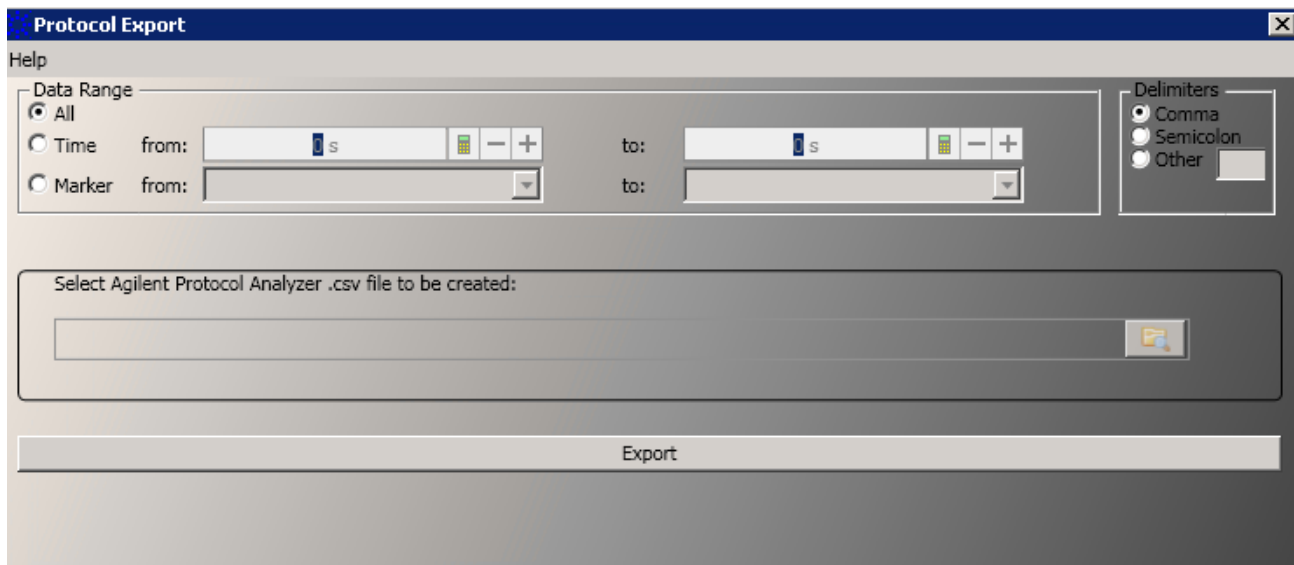


Figure 1 Protocol Export GUI

Exporting Packet Data to a .csv File

Before you start


Before you start exporting the packet data using the CSV Export utility, ensure that:

- The packet data that you want to export is displayed in the Protocol Viewer window of the Logic Analyzer GUI. The CSV Export utility exports only that packet information which is displayed under various columns in Protocol Viewer. Therefore, ensure that you add/delete the columns from Protocol Viewer based on what information you want to export.

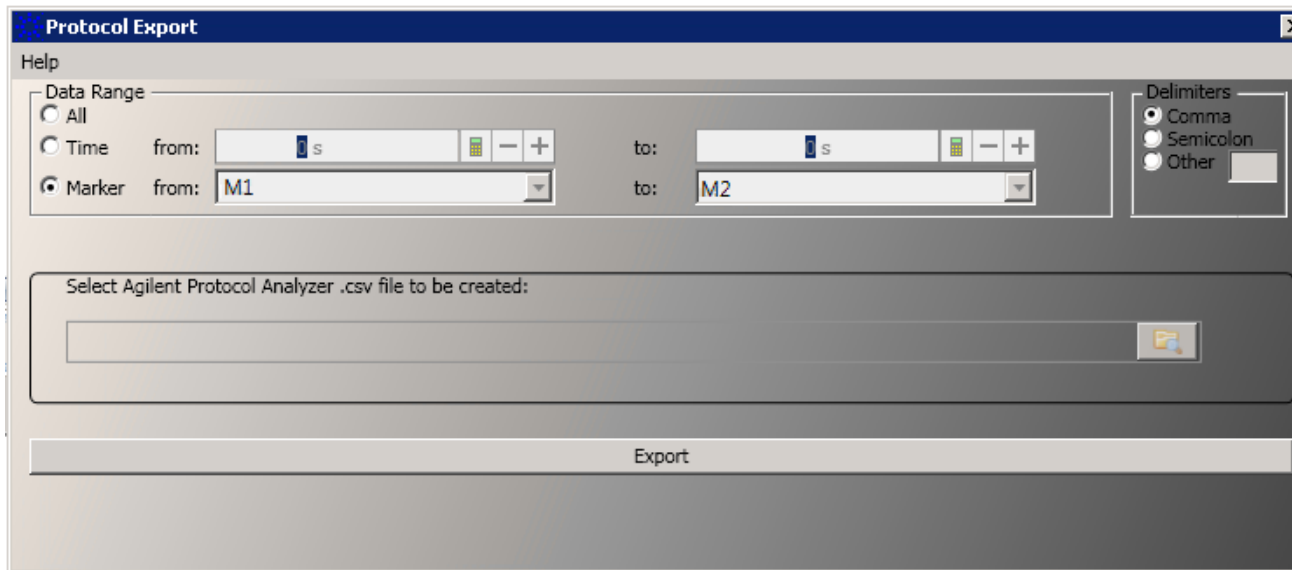
NOTE

If there are overlay columns in the Protocol Viewer window, then the CSV Export utility will export the data in these overlay columns as separate columns in the .csv file.


To export packet data to a .csv file

- 1 Click the  **Export Protocol Data in CSV Format** icon displayed in the Protocol Viewer toolbar.

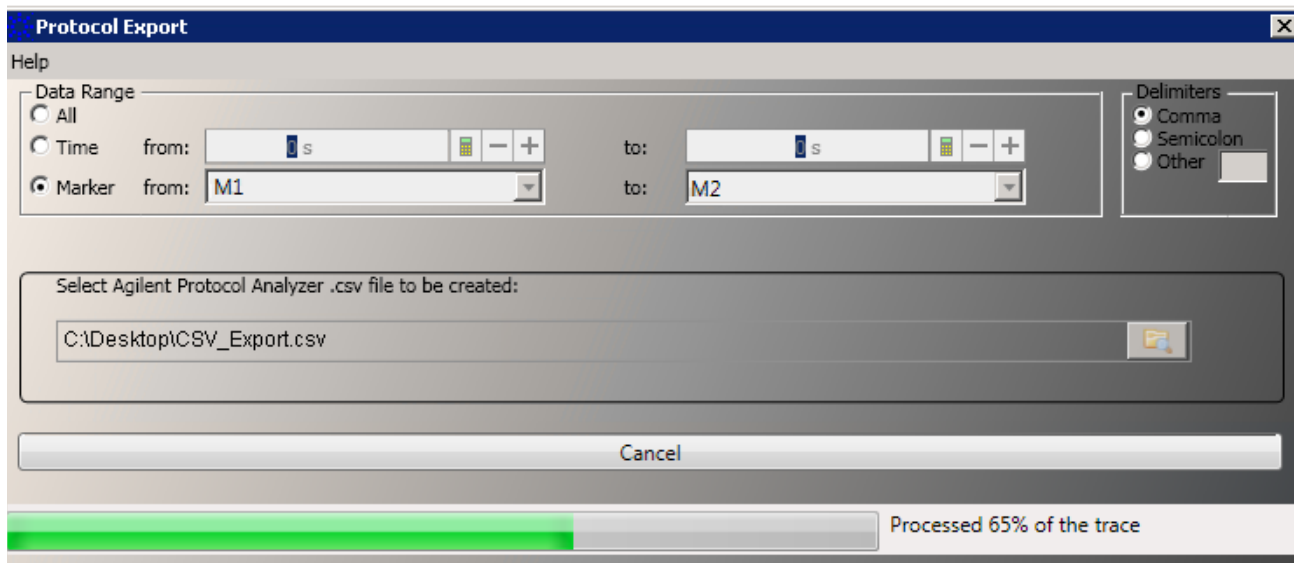
The **Protocol Export** GUI is displayed.



- 2 From the **Data Range** group box, select the range of packet data that you want to export from Protocol Viewer. You can select:

- **All** - to export all the data displayed in the Protocol Viewer to a .csv file.
 - **Time** - to specify a start and an end time range. The packet data matching this time range is exported to a .csv file.
 - **Marker** - to select the start and end markers. All the markers that exist in the Logic Analyzer GUI are displayed as options in the from and to listboxes. The packet data matching the selected marker range is exported to a .csv file. If required, you can create markers using the Markers menu in the Logic Analyzer GUI.
- 3 From the **Delimiters** group box, select the delimiter that you want to use to delimit the packet data in the .csv file. You can either choose to create a comma or semicolon separated .csv file or a delimiter of your choice.
 - 4 Specify the full path and name for the .csv file to which you want to export the packet data. Alternatively, click the  button to browse the path for this file. On starting the export, the CSV Export utility creates a .csv file with the specified name and stores it at the specified path.
 - 5 Click the **Export** button to start the export as per the specified details.

The progress and status of the export process is displayed in the status bar at the bottom of the Protocol Export GUI.



1 Using the CSV Export Utility

When the export process is complete, the status is displayed as **CSV file exported**.

